

# EXP-EPS® 719\*

## TECHNICAL SUPPORT

The following guidelines are offered to assist the coatings formulator in achieving the high performance properties offered by EXP-EPS® 719\*. These guidelines are offered for illustration purposes only; the coatings formulator bears sole responsibility for the performance of the final coating product.

## SDS

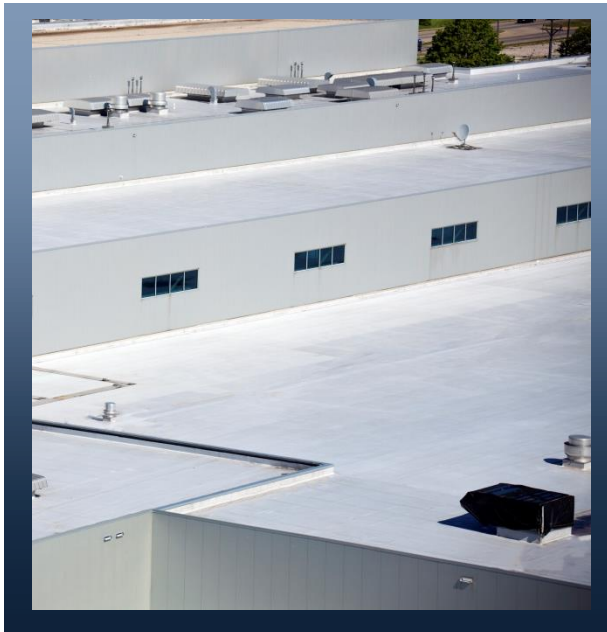
For details on health, safety and handling information, Safety Data Sheets (SDS) are available at [www.epscca.com](http://www.epscca.com).

For more information on any of our products or services please visit us on the Web at: [www.epscca.com](http://www.epscca.com)

The data on this sheet represent typical values. Because application variables are a major factor in product performance, this information should serve only as a general guide. EPS assumes no obligation or liability for use of this information. **UNLESS EPS AGREES OTHERWISE IN WRITING, EPS MAKES NO WARRANTIES, EXPRESS OR IMPLIED, AND DISCLAIMS ALL IMPLIED WARRANTIES INCLUDING WARRANTIES OF MERCHANTABILITY OR FITNESS FOR A PARTICULAR PURPOSE OR FREEDOM FROM PATENT INFRINGEMENT. EPS WILL NOT BE LIABLE FOR ANY SPECIAL, INCIDENTAL OR CONSEQUENTIAL DAMAGES.** Your only remedy for any defect in this product is the replacement of the defective product, or a refund of its purchase price, at our option.

EPS BV  
P.O. Box 358, 3340 AJ  
H.I.Ambacht  
Nijverheidsweg 35, 3341 LJ  
H.I.Ambacht  
The Netherlands  
T : +31 78 6833250 F : +31 78  
6812697  
[info.nl@eps-materials.com](mailto:info.nl@eps-materials.com)

## Technical Data Sheet



EXP-EPS® 719\* is designed to minimize asphalt bleed through in cool roof coatings while maintaining flexibility and toughness.

### Physical data

**Solids by weight [%]:** 55.0 ± 1

**Viscosity, 23 °C** < 500

**[mPa·s]:**

**(Brookfield, Spindle 2)**

**pH value [-]:** 8.5 – 9.0

### Typical values

**MFFT [°C]:** 10 ca.

**Density @ 20 °C** n.a.

**[kg/m<sup>3</sup>):**

### Storage

EXP-EPS® 719\* should be stored in a closed container at a dry place at storage temperatures between 5 °C and 30 °C.

### Stability

Under the above mentioned storage condition the stability will be 6 months.

### Description

All acrylic emulsion.

- Flexible at temperatures as low as -10°C
- Adhesion to asphalt, PVC, metal and other common roofing substrates
- Resistance to dirt pickup
- UV light resistance
- Excellent toughness with both high tensile strength and elongation
- Environmentally friendly non-APEO raw materials
- Can be used in both base coat and top coat formulations

(\*) NB: EXP-EPS® 719 is an experimental product. Both composition and processing conditions may be subject to change.

Date of issue: March 2019