

# DYFLEX® LP 1225

## TECHNICAL SUPPORT

The following guidelines are offered to assist the coatings formulator in achieving the high performance properties offered by DYFLEX® LP 1225. These guidelines are offered for illustration purposes only; the coatings formulator bears sole responsibility for the performance of the final coating product.

## SDS

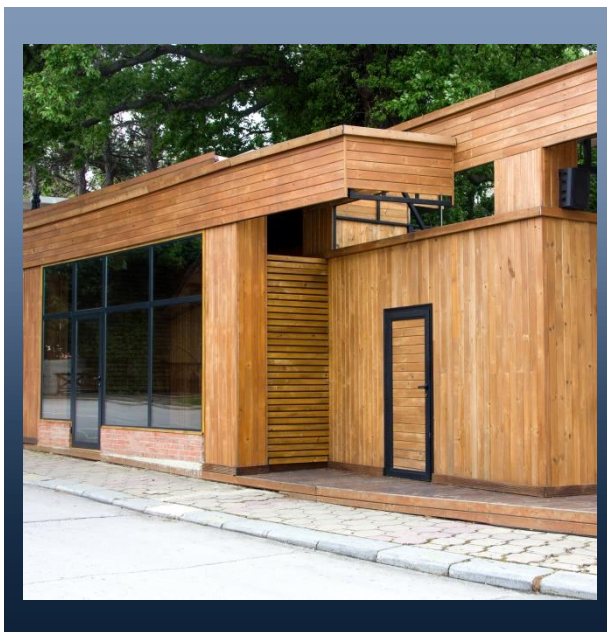
For details on health, safety and handling information, Safety Data Sheets (SDS) are available at [www.epscca.com](http://www.epscca.com).

For more information on any of our products or services please visit us on the Web at: [www.epscca.com](http://www.epscca.com)

The data on this sheet represent typical values. Because application variables are a major factor in product performance, this information should serve only as a general guide. EPS assumes no obligation or liability for use of this information. **UNLESS EPS AGREES OTHERWISE IN WRITING, EPS MAKES NO WARRANTIES, EXPRESS OR IMPLIED, AND DISCLAIMS ALL IMPLIED WARRANTIES INCLUDING WARRANTIES OF MERCHANTABILITY OR FITNESS FOR A PARTICULAR PURPOSE OR FREEDOM FROM PATENT INFRINGEMENT. EPS WILL NOT BE LIABLE FOR ANY SPECIAL, INCIDENTAL OR CONSEQUENTIAL DAMAGES.** Your only remedy for any defect in this product is the replacement of the defective product, or a refund of its purchase price, at our option.

EPS BV  
P.O. Box 358, 3340 AJ  
H.I.Ambacht  
Nijverheidsweg 35, 3341 LJ  
H.I.Ambacht  
The Netherlands  
T : +31 78 6833250 F : +31 78  
6812697  
[info.nl@eps-materials.com](mailto:info.nl@eps-materials.com)

## Technical Data Sheet



DYFLEX® LP 1225 is a binder for interior and exterior wood applications such as transparent lazures, enamels and varnishes with exceptional leveling properties and UV resistance. In-can transparency is a key feature of the product.

### Physical data

Solids by weight [%]: 45.0 ± 1

Viscosity, 23 °C < 500

[mPa-s]:

(Brookfield, Spindle 2)

pH value [-]: 7.3 – 8.3

### Typical values

MFFT [°C]: + 5

Density @ 20 °C 1060

[kg/m3]:

### Storage

DYFLEX® LP 1225 should be stored in a closed container at a dry place at storage temperatures between 5 °C and 30 °C.

### Stability

Under the above mentioned storage condition the stability will be 12 months.

### Description

Self crosslinking acrylic copolymer for joinery.

- Exceptional leveling
- In-can transparency
- Excellent block
- Flexible
- Exterior durability